

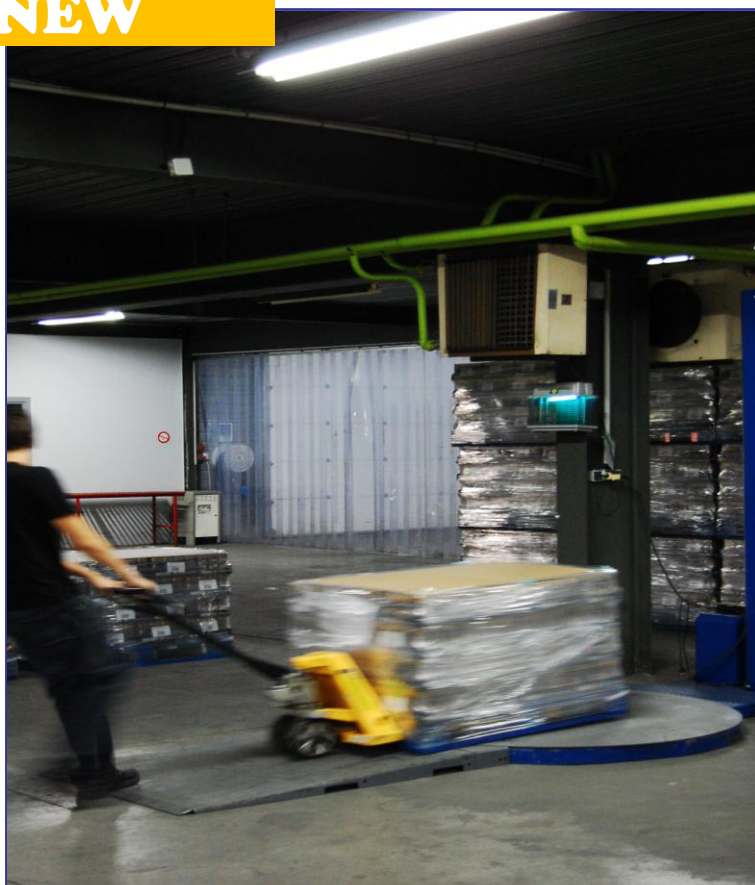
RE-PACKING

Think about reshaping your pallets!

Palletising, Repalletising, depalletising, unitising, de-unitising, relabelling, unlabelling. Upgrading to customer's or manufacturer's requirements, etc.

NEW

- *Speed*
- *Secure inspection*
- *Traceability*
- *Qualified and conscientious personnel*
- *Detailed report*
- *Savoir-faire*
- *Large storage capacity*



ELCOWA service

ELCOWA, a French company founded in 1965, has always been positioned towards detection and monitoring. In 1996 a specific centre was created to monitor products that are contaminated, suspected to be contaminated or sub-standard.

From our storage capacity exceeding 1000 pallets, we inspect our customers' products carefully before they leave for the market. We are equipped with X-ray, magnetic field, and infrared systems to satisfy all monitoring requirements.

As our company was already familiar with product handling and the respect of palletisation plans, it was only a small step to being able to offer this new service.

elcowa



RE-PACKING, General points

“Re-Packing” or “reshaping” describes the action of repackaging a pallet that is in one configuration into another to satisfy a customer order, a marketing change, a palletisation error or any other requirement.

Here a few examples of our actions:

- Changing a palletisation plan
- Changing the number of product layers
- Unitising trays of products
- De-unitising trays of products
- Unlabelling trays
- New labelling
- Changing the type of pallet
- Repair to a damaged pallet
- Renewal of stretch wrapping
- Addition of strengthening corner stays
- Stabilising sheet insertion

You can consult us for any other type of re-packing. Re-packing can be combined with screening for foreign bodies or weight verification (TU1/TU2 observance).

:: DETAIL OF THE SERVICE ::

Reception – unloading – identification - pallet storage – depackaging – Re-Packing – repackaging products according to new specifications – repalletising as existing – automatic stretch wrapping by machine and identification of screened pallets – insurance.

Our premises are equipped with a 600 mm wide automatic stretch wrapping machine for re-stretch wrapping trays. Sub-standard products are systematically separated and marked for subsequent analysis by you.

A detailed report of the operation with traceability.

For reasons of cost, lead time and insurance return carriage of goods for processing is for the customer’s account.

:: PRICING ::

Pricing depends on applications, the difficulty of the work and lead times. On receipt of your specifications we shall submit our most economical offer.



ELCOWA s.a. 27, Rue de Ruelisheim F-68200 MULHOUSE
Phone +33 (0) 389 573 573 fax +33 (0) 389 571 718
E-mail: info@elcowa.fr - Web: www.elcowa.fr